



Home > Products > ProX Cases > Amp & Effects Rack Cases > Mixer Combo Racks > 2U Vertical Rack Mount Flight Case with 10U Top for Mixer Combo Amp Rack with Caster Wheels

SKU: T-2MRSS

Permalink: <http://www.proxdir.com>[Search on Google](#)

2U Vertical Rack Mount Flight Case with 10U Top for Mixer Combo Amp Rack with Caster Wheels

[Find A Dealer](#)

Product Images

[Download Product Images](#)

Our Products And You

Submit your
story

ProX T-2MRSS 2U Vertical Rack Mount Flight Case with 10U Top for Mixer Combo Amp Rack with Caster Wheels

Description

ProX **T-2MRSS 10U Vertical Rack Mount Flight Case with 10U Top for Mixer Combo Amp Rack** with Caster Wheels. Our vertical amplifier rack cases offer an ideal storage solution, ensuring convenient security for a diverse range of amplifiers, professional DJ mixers, effects units, and any other standard 19" rack-mountable Pro Audio, DJ, and Network equipment.

Crafted with a robust construction design and equipped with dual mounting rails, this case ensures your equipment remains securely in place, preventing dislodging or slipping and minimizing strain on the rack ears. These high-quality products come complete with external spring-loaded handles and butterfly twist latches that even include padlocks for enhanced security.

Constructed from thicker 3/8" plywood, this case provides premium protection for a lifetime*. Beyond its heavy-duty build and user-friendly features, this case offers a stylish, durable, and dependable solution that stands the test of time.

Presenting the ProX ATA 300 Style Flight Case, designed with a laminated surface on 3/8" plywood for top-notch durability. Crafted with our signature Honeycomb Digital™ Surface Protection, this case boasts a sleek and modern appearance while safeguarding your valuable equipment.

This case offers a seamless upgrade through the addition of a convenient Laptop Shelf

Designed to seamlessly integrate with the [T-LPSMRMK2](#) sliding laptop shelf (sold separately), this item offers enhanced functionality.

Features

- 2U Space Front Load 20" Rail Depth
- 10U Top Load ideal for Audio Mixers
- Laptop Shelf Compatible (T-LPSMR MK2)
- Standard 19" Width Mounting Rail
- Front and Rear Removable Lids
- Rugged Steel Rack Rails
- Recessed Spring-Action Handles per Side
- Easy Locking Fit and Tongue
- Heavy Duty, Powerful Steel Ball Corners

- Industrial Strength Latches
- Dual Anchor Rivets
- 2.5" Front/Rear Door Depth
- Honeycomb Digital™ Protected Surface
- 3/8" (9mm) Thickness Plywood
- Rugged 4" Smooth Caster Wheels (2 Locking)
- *Limited Lifetime Warranty

To Fit

Any trademarks, trade names or brand names appearing herein that do not belong to ProX are the property of their respective owners and/or companies, and such appearance doesn't and shall not constitute or imply endorsement, sponsorship or recommendation by ProX.

Yamaha

(1) [DM3](#) • 18.00"L x 12.60"W x 5.60"H • RK-DM2 Rack mount kit

Exterior Dimensions & Weight

13.00"H x 24.00"W x 21.50"L - Weight: 37.00 lbs

Shipping Dimensions & Weight

Box 1 of 1: 15.00"H x 25.00"W x 23.00"L - Shipping Weight: 42.00 lbs

Suggested Shipping Method: Parcel

UPC

753182906263

Our Products and You

Submit your
story

Commonly Asked Questions

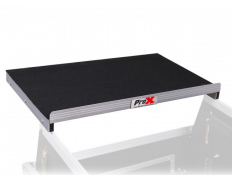
+ Where can I buy one?

[submit a question](#)

Customer Testimonials

What did you think

Related Products



Universal Sliding Laptop Shelf Add-on for ProX Combo Rack Mount Mixer Cases
SKU: T-LPSMR